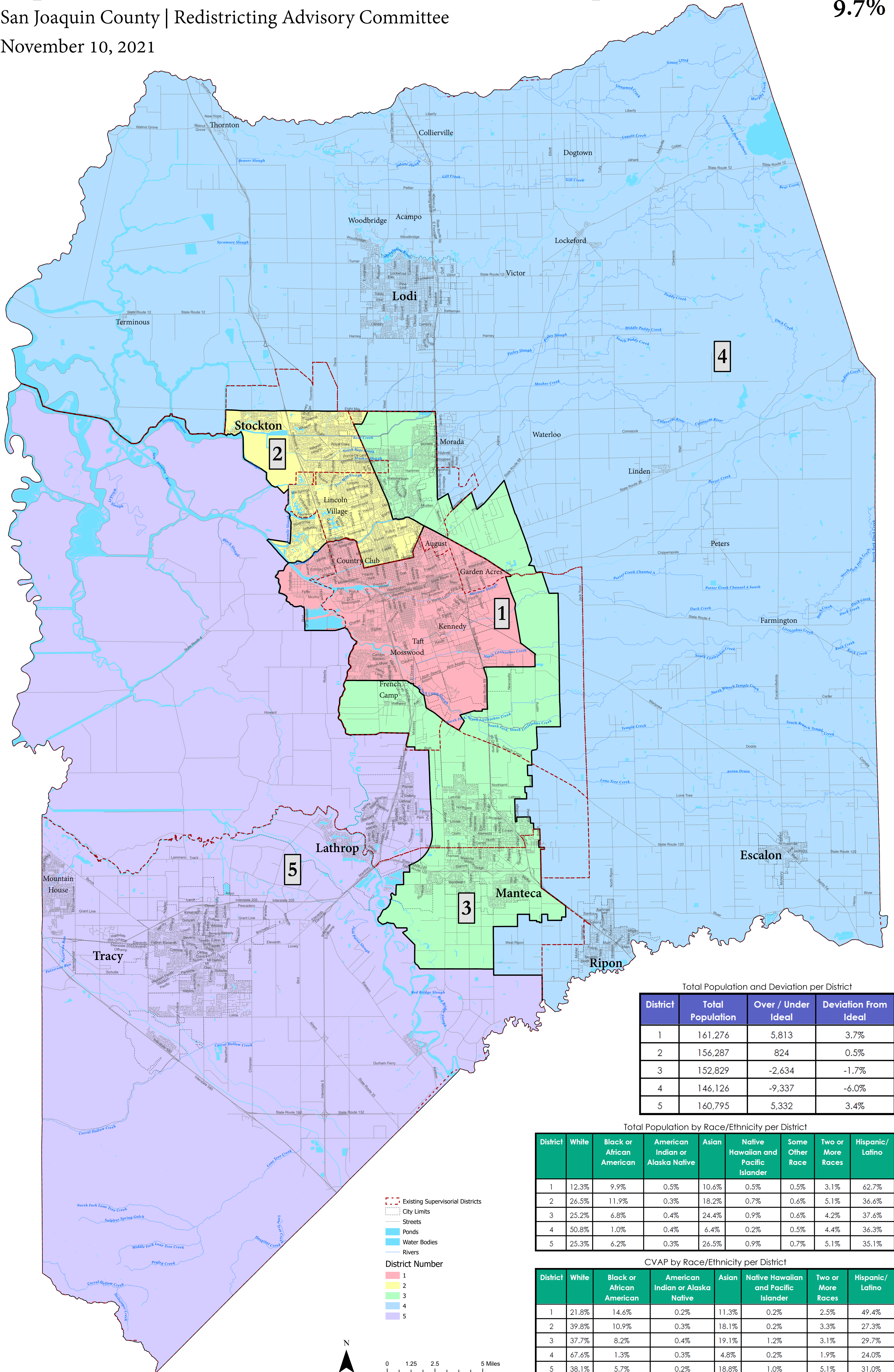


Supervisory Districts Recommended Map A

San Joaquin County | Redistricting Advisory Committee

November 10, 2021

Total Deviation
9.7%



Total Population and Deviation per District

District	Total Population	Over / Under Ideal	Deviation From Ideal
1	161,276	5,813	3.7%
2	156,287	824	0.5%
3	152,829	-2,634	-1.7%
4	146,126	-9,337	-6.0%
5	160,795	5,332	3.4%

Total Population by Race/Ethnicity per District

District	White	Black or African American	American Indian or Alaska Native	Asian	Native Hawaiian and Pacific Islander	Some Other Race	Two or More Races	Hispanic/Latino
1	12.3%	9.9%	0.5%	10.6%	0.5%	0.5%	3.1%	62.7%
2	26.5%	11.9%	0.3%	18.2%	0.7%	0.6%	5.1%	36.6%
3	25.2%	6.8%	0.4%	24.4%	0.9%	0.6%	4.2%	37.6%
4	50.8%	1.0%	0.4%	6.4%	0.2%	0.5%	4.4%	36.3%
5	25.3%	6.2%	0.3%	26.5%	0.9%	0.7%	5.1%	35.1%

CVAP by Race/Ethnicity per District

District	White	Black or African American	American Indian or Alaska Native	Asian	Native Hawaiian and Pacific Islander	Two or More Races	Hispanic/Latino
1	21.8%	14.6%	0.2%	11.3%	0.2%	2.5%	49.4%
2	39.8%	10.9%	0.3%	18.1%	0.2%	3.3%	27.3%
3	37.7%	8.2%	0.4%	19.1%	1.2%	3.1%	29.7%
4	67.6%	1.3%	0.3%	4.8%	0.2%	1.9%	24.0%
5	38.1%	5.7%	0.2%	18.8%	1.0%	5.1%	31.0%